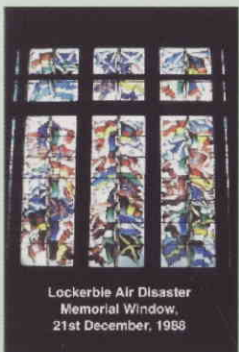


The Lockerbie Air Disaster

Memorial & Garden of Remembrance

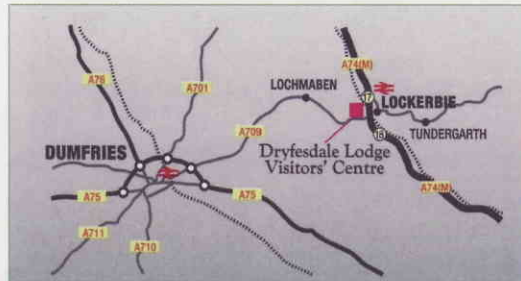
Situated within the grounds of
Dryfesdale Cemetery, just a short walk
from the Visitors' Centre



This commemorative
stained glass window can
be viewed by visitors to
Lockerbie Town Hall,
which is located in the
town centre, adjacent to
the War Memorial.

Dryfesdale Lodge Visitors' Centre

Dumfries Road, Lockerbie
Dumfries & Galloway DG11 1HZ



How To Find Us

The Visitors' Centre is situated at the
Lockerbie Dryfesdale Cemetery and
Garden of Remembrance, on the
A709 Dumfries to Lockerbie road.
Access to Lockerbie can be made from the
M74 Motorway at Junction 17/18.

A warm welcome awaits you!

Bus tours and School Parties can be catered for.

Donations Welcome

For further details please telephone
01576 205962 during opening hours
or visit our website
www.dryfesdalelodge.org.uk

Sponsored by



Dryfesdale Lodge Visitors' Centre

Lockerbie, Dumfries & Galloway

Museum & Exhibitions Area



Open daily from end of March
10.00am – 4.00pm until 30th September
from October until 21st December
11.00am – 3.00pm (closed Wednesdays)

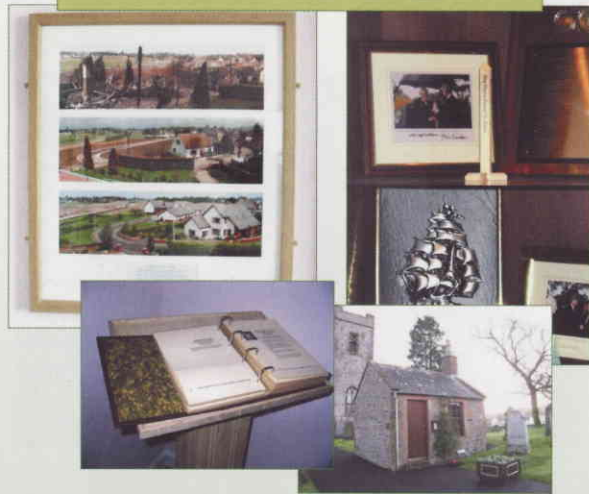
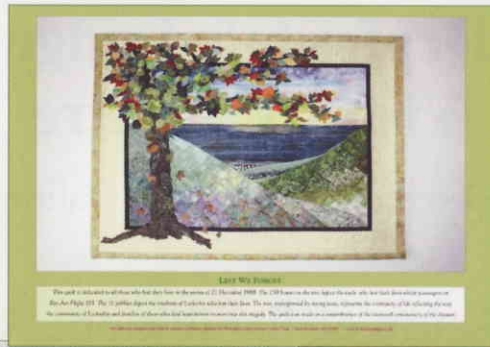
Scottish Charity – SC032947
Free parking and admission

Toilets - Disabled Access

01576 205962



trustees@dlvc.demon.co.uk



Dryfesdale Room

A place of quiet contemplation, where visitors can peruse 'On Eagles Wings' which records the names and personal information of the victims of the disaster of 21st December 1988.

A bomb exploded on board Pan Am Flight 103, over Lockerbie, killing all 259 passengers and crew, together with 11 people on the ground.

Commemorative Quilt on permanent display.



History Room

A series of wall-mounted tableaux, detailing the rich history of Lockerbie and surrounding area - from prehistoric times to the present day.

Of particular interest is information about the Roman occupation of this Border region of Scotland.



Exhibition Room

Of great interest are a number of temporary exhibitions of local art and crafts, together with information about the many places of interest for guests to visit during their stay in the Lockerbie area.